



CX7 Power Transformers

TN23

Early Signal/One CX7s had a problem with the main power transformer. According to Paul Kollar, the first production run of 100 had bad transformers. All of the transformers in the first run had to be replaced. New transformers are available from

Peter Dahl
5869 Waycross Ave.
El Paso, TX 79924
915.751.2300
www.pwdahl.com

Once you receive your transformer, temporarily attach a power cord, and if possible a load, and test it for voltages, particularly hum and vibration. If it is excessive, return it with a note explaining the problem.

I had a problem with the transformer that I ordered that was not evident until well into the installation process. Referring to the drawing (Fig. ?) you will see a band compressing the transformer. It was incorrectly positioned on the transformer supplied and exceeded the space envelope. This should be checked or a note sent when ordering the transformer.

Prices

Peter Dahl Transformer
S/N 020389
1/89 \$185

Table 1: CX7 Power Transformer Wire Connections

Lead	Pin	Ohms	Color	Coil	Description
1	164 S	1.7	Black	L	117 VAC 60 Hz
2	165 S				
3	166 S	1.7	Black	R	117 VAC 60 Hz
4	163 S				
5	160 P	68.5	Red	L	525 VAC @.228 A sec #3
6	159 P				
7	159 P	68.9	Red	R	525 VAC @.228 A sec #3
8	161 P				
9	153 S	49.2	Red	R	230 VAC @.228 A sec #1
10	156 P				
11	128 P	5.1	Yellow	L	0-37-74 VAC @.144 A sec #1
12	gnd				
13	gnd				
14	129 P	5.2			
15	146 S	.4	Wht/Gry	R	0-21-43 VAC @1.16 A sec #2
16	gnd				
17	gnd				
18	151 P	.4			



CX7 Power Transformers

TN23

Table 1: CX7 Power Transformer Wire Connections

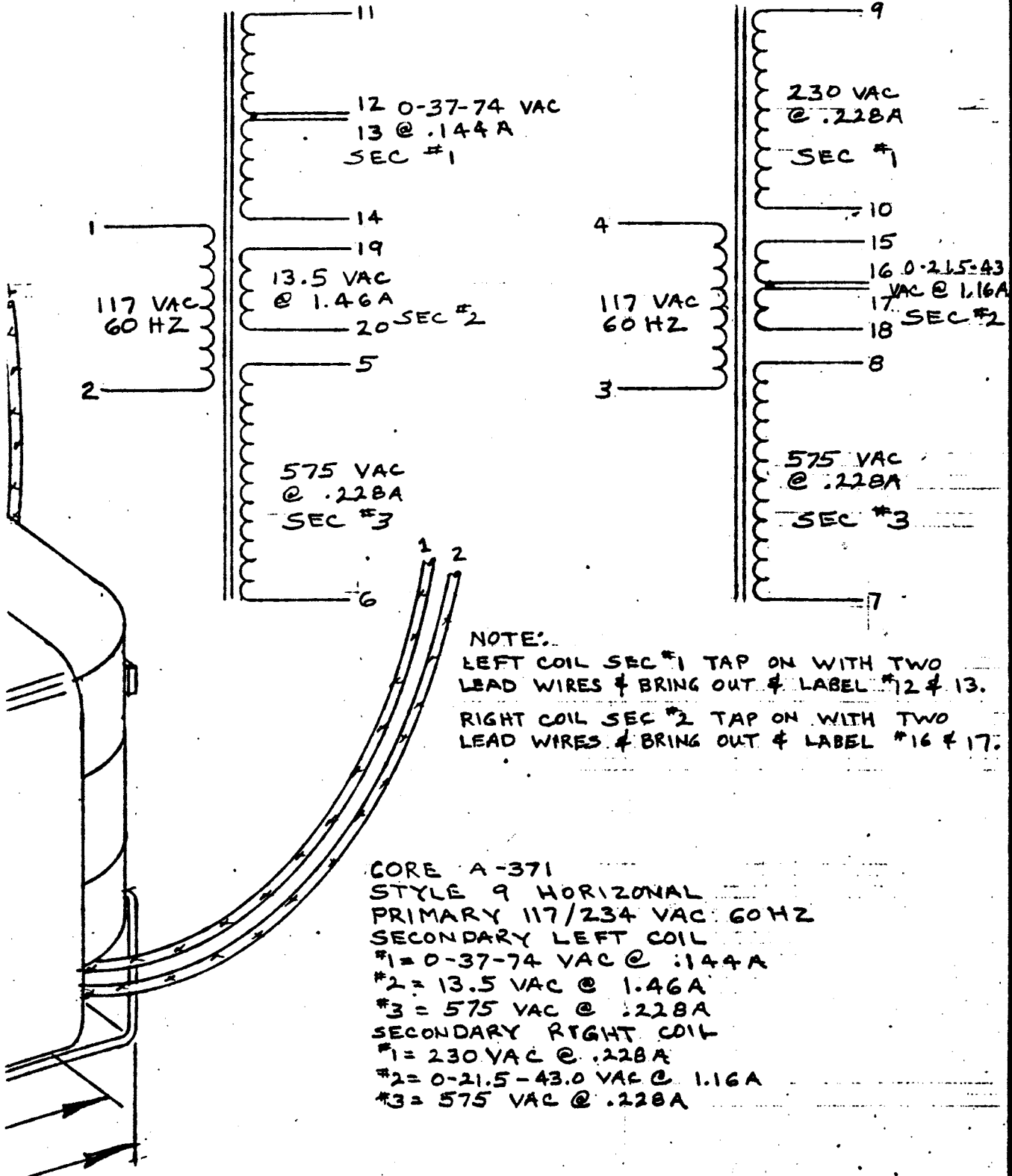
Lead	Pin	Ohms	Color	Coil	Description
19	J6-8 S	.2	Green	L	13.5 VAC @1.465 A

Notes: On pin connections; S is solder, P is plug.

W8CXS & KA4GAV

LEFT COIL

RIGHT COIL



NOTE:
 LEFT COIL SEC #1 TAP ON WITH TWO LEAD WIRES & BRING OUT & LABEL #12 & 13.
 RIGHT COIL SEC #2 TAP ON WITH TWO LEAD WIRES & BRING OUT & LABEL #16 & 17.

CORE A-371
 STYLE 9 HORIZONTAL
 PRIMARY 117/234 VAC 60HZ
 SECONDARY LEFT COIL
 #1 = 0-37-74 VAC @ .144A
 #2 = 13.5 VAC @ 1.46A
 #3 = 575 VAC @ .228A
 SECONDARY RIGHT COIL
 #1 = 230 VAC @ .228A
 #2 = 0-21.5-43.0 VAC @ 1.16A
 #3 = 575 VAC @ .228A

TOLERANCES (EXCEPT AS NOTED)	REVISIONS			PETER W. DAHL CO. INC EL PASO, TEXAS 79924					
	NO.	DATE	BY						
DECIMAL	1			SIGNAL ONE CX7A TRANSFORMER					
±	2								
FRACTIONAL	3						DRAWN BY MLM 1-20-89	SCALE FULL	MATERIAL 2
±	4						CHK'D	DATE 1-25-89	DRAWING NO. T-0291
ANGULAR	5						TRACED	APP'D P.W.D.	
±									